

£1,700 PCM
Thistle Grove

Welwyn Garden City, AL7 4AL

PROPERTY SUMMARY

A beautifully presented three bedroom family home with a garage, close to woodland walks, countryside and all major road links. Available now.

Located on the eastern side of Welwyn Garden City, this great size house is found in excellent order throughout with many quality fixtures and fittings. The property features on the ground floor a main living room with a window to the front and double glazed French doors to the rear. There is a fully modernised kitchen with a number of built-in appliances and an extensive range of modern wall mounted and base level units with wood block worktop surfaces.

On the first floor there are three good size bedrooms and a delightful modern four piece bathroom suite which includes a stylish roll top stand-alone bath.

The exterior benefits from off street parking with a shared driveway leading to a single refurbished wooden built garage with parking also in front. The rear garden is approximately 100ft long, is extremely private and is mainly laid

3

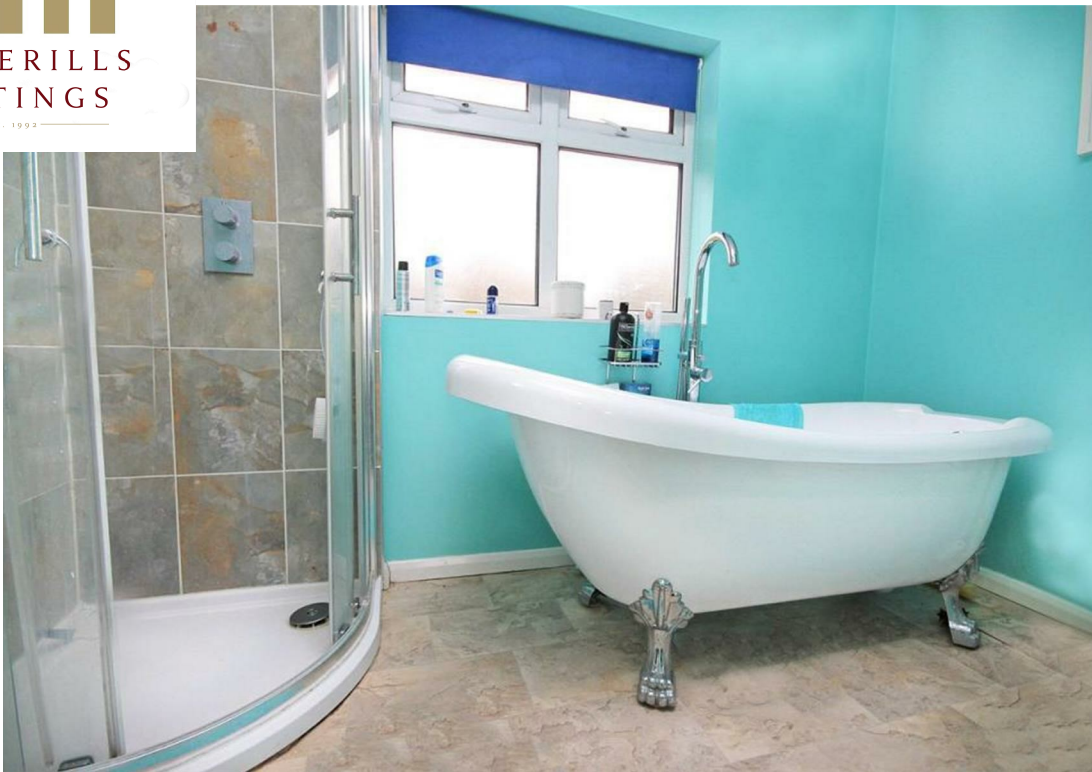
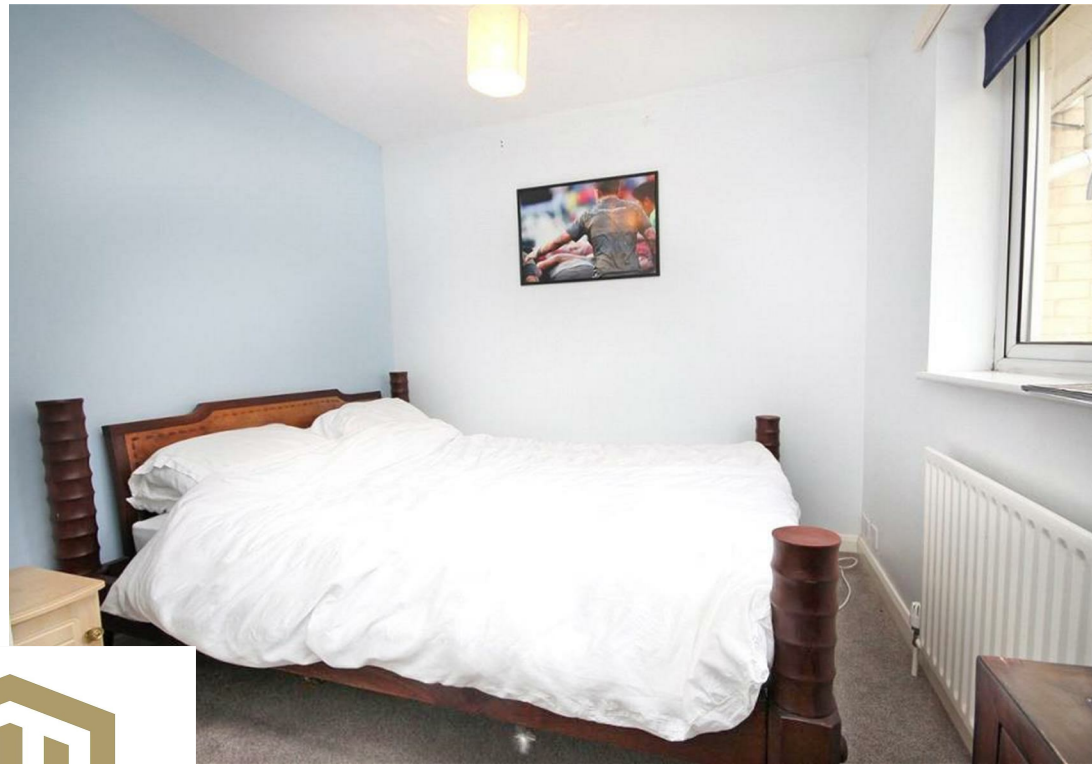


1



1









This floor plan is for illustrative purposes only. The measurement and position of each element is approximate and must be viewed as such.

LOCAL AUTHORITY

TENURE

COUNCIL TAX BAND

C

VIEWINGS

By prior appointment only

Energy Efficiency Rating		
	Current	Potential
Very energy efficient - lower running costs		
(92 plus) A		
(81-91) B		
(69-80) C		
(55-68) D		
(39-54) E		
(21-38) F		
(1-20) G		
Not energy efficient - higher running costs		
England & Wales		EU Directive 2002/91/EC

Agents Note: Whilst every care has been taken to prepare these particulars, they are for guidance purposes only. All measurements are approximate and are for general guidance purposes only and whilst every care has been taken to ensure their accuracy, they should not be relied upon and potential buyers/tenants are advised to recheck the measurements



OFFICE ADDRESS

Putterills Lettings
123 London Road
Knebworth
SG3 6EX

OFFICE DETAILS

01462 419333
lettings@putterills.co.uk
www.putterills.co.uk